



InvestPak specification

General

- 6-star energy rating
- Light fittings
- Carpet*
- Blinds to all rooms
- Service connections (water, sewer, storm water, underground power)
- Class M concrete slab foundation
- Permits, plans and specifications
- Soil Testing
- Solar or gas hot water service
- Gas Ducted Heating
- Insulation to ceiling and external walls
- Ceramic tiles to wet areas
- Laundry trough with by-pass
- Gainsborough ceramic door furniture
- Aluminum windows
- Feature front door
- Entry Security door
- Rear (laundry) door (weatherproof)
- Interior doors- painted flush panel
- Smoke detectors
- Safety switch
- Weatherseals to front and laundry doors
- Deadlocks to external doors
- Fly screens
- 3 TV points and TV aerial
- Choice of colours - bricks, roof tiles, laminates, painting, carpet, tiles etc.*
- Three months maintenance inspection
- 6 ½ year structural warranty
- Double garage with remote
- Doorbell

Kitchen

- Fully laminated kitchen cupboards
- Dishwasher included
- Electric wall oven gas hot plate
- Overhead cupboards to rangehood
- Double or 1½ bowl stainless sink
- Ceramic wall and floor tiles*
- Ceramic floor tiles to meals area
- Provision for microwave oven

Bathroom

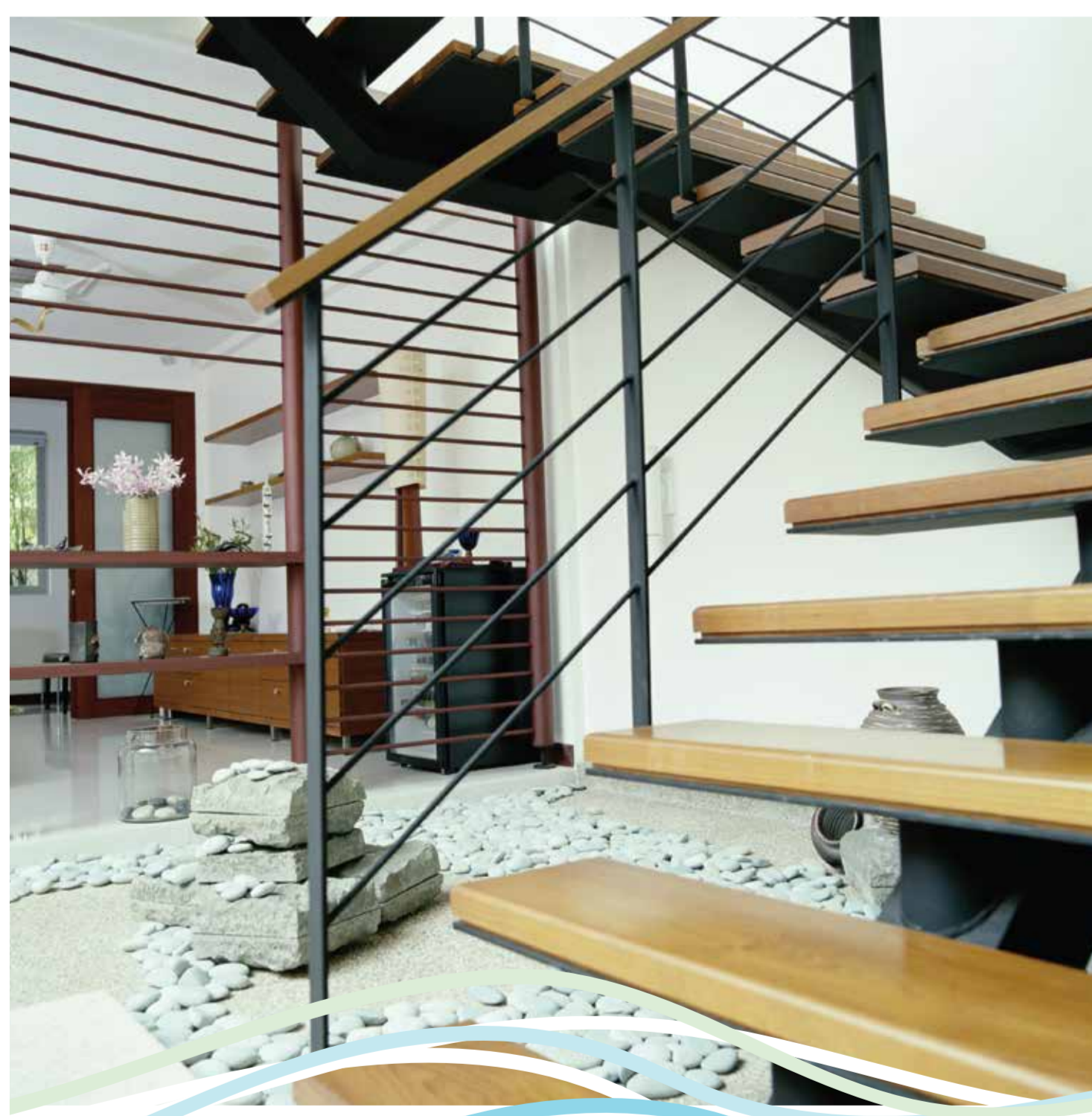
- Fully laminated vanity units
- Safety shower screens
- Mirrors to bathrooms over vanities
- Towel rail and toilet roll holder
- Dual flush toilet roll holder
- 3 in 1 fan/light/heater or heating outlet
- Ceramic floor and wall tiles*
- Privacy locks to bathroom and toilet

Land

- Concrete driveway and paths
- Landscaping, trees, lawn, garden shrubs
- Extensive paving with entertainment area/BBQ area
- Attractive streetscape
- Decorative street lighting
- Easy access to community facilities
- Fencing to (3) sides

**from Builder's range*

Due to Townshend Group policy of continuous development, Specifications are indicative and are subject to change without notice. Detailed specification will be available with purchaser's contracts.



Townshend Homes Group

Invest
Live
Educate
Work
Retire